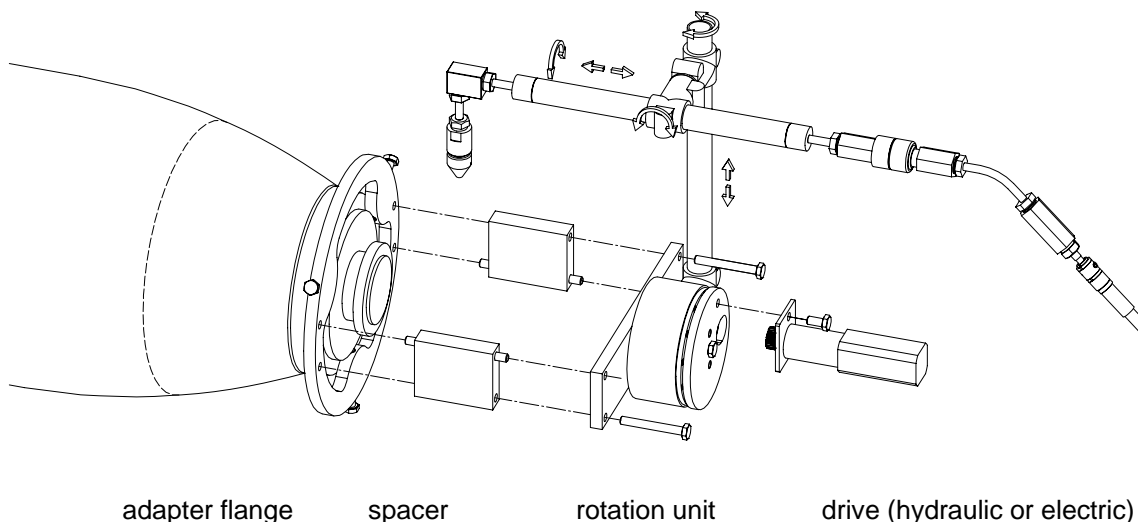


Base Fuse Manipulator

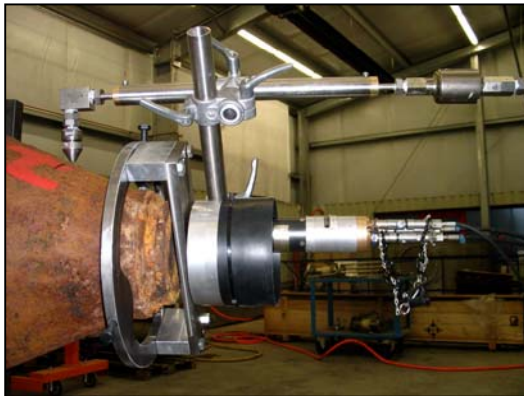
Cutting device e.g. for SAP-, MC-, GP-, AP-bombs



Base Fuse Manipulator

Working area	cutting edge from \varnothing 200 mm up to \varnothing 500 mm
Drive	hydraulic or electric
Material	aluminium
Traverse speed	hydraulic: 30–300 mm/min electric: 10-400 mm/min
Weight	approx. 10 kg
Size (L x W x H)	300 mm x 150 mm x 100 mm
Adapter Flange	five different sizes from \varnothing 100 mm up to \varnothing 400 mm
Spacer	three different sizes from 50 mm up to 150 mm

Base Fuse Manipulator



Hydraulic Unit

Electric power supply	0.25 kW, 230 V / 50 Hz
Hydraulic fluid	mineral oil
Flow	max. 1 l/min, max. 80 bar
Weight of hydraulic unit	58 kg (127.89 lb) full
Size (L x W x H) of hydraulic unit	700 mm x 440 mm x 560 mm in stainless steel frame
Controls	direction selection, speed control
Weight of control panel	2 kg

Generator

Electric power	2.0 kW, 230 V / 50 Hz
Drive	diesel
Weight	55 kg (121.28 lb)
Size (L x W x H)	536 mm x 400 mm x 458 mm in steel frame

Accessories

Energy cable	20 m (0.6 kg/m)
Control cable	max. 500 m (0.4 kg/m)
Hydraulic hose	15 m (0.2 kg/m)

